

Thermal Receipt Printer

User Manual

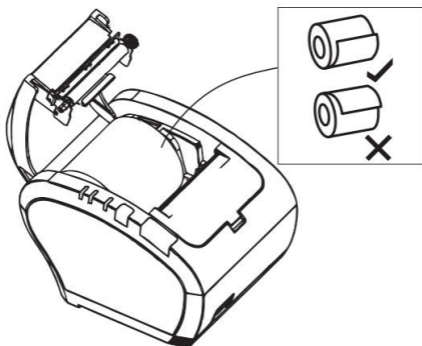
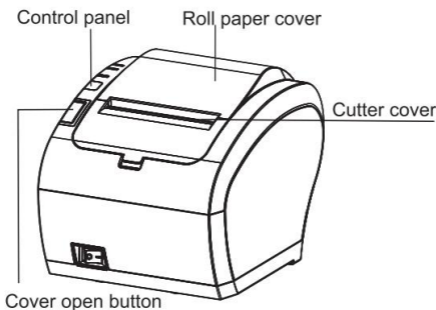
Please scan QR code to download CD Files

Download Link:

<http://www.barcoderead.net/printer/80C.zip>



Part Names



Self Test

Printer connected power and keep off status, then press the "FEED" button and turn on the power, after hear the beeper sounds, release "FEED button", first page will be printed, the second press in 2s for code page printing.

USB/Serial Port Driver Installation



- 1.Double-click "POS Printer Driver V8.11"
- 2.USB driver installation or Serial port driver installation

1)Select USB port and printer type.

1)Select Serial port, printer type and port number.

Install Receipt Printer Driver

You are using Windows 11 x64 OS.
Please select Windows 11 to install.

Select Windows OS

☐ Windows XP ☐ Windows Vista
☐ Windows 2003 ☐ Windows 8/8.1
☐ Windows 7 ☐ Windows 10
☒ Windows 11

Port Check
USB001

Printer Interface :
☒ USB ☐ COM ☐ LAN ☐ BLE

Receipt printer
☒ POS-80C ☐ POS-80
☐ POS-58C ☐ POS-58
☐ POS-76C ☐ POS-76

Check Port
PrintSelftest
Install Now

*Remarks: "C" means item with cutter

☐ Set Default Printer English

Install Receipt Printer Driver

You are using Windows 11 x64 OS.
Please select Windows 11 to install.

Select Windows OS

☐ Windows XP ☐ Windows Vista
☐ Windows 2003 ☐ Windows 8/8.1
☐ Windows 7 ☐ Windows 10
☒ Windows 11

Port Check
COM3

Printer Interface :
☐ USB ☒ COM ☐ LAN ☐ BLE

Receipt printer
☒ POS-80C ☐ POS-80
☐ POS-58C ☐ POS-58
☐ POS-76C ☐ POS-76

Check Port
PrintSelftest
Install Now

*Remarks: "C" means item with cutter

☐ Set Default Printer English

2)Click Start Installation.

3)Select OK.

Install Receipt Printer Driver

You are using Windows 11 x64 OS.
Please select Windows 11 to install.

Select Windows OS

☐ Windows XP ☐ Windows Vista
☐ Windows 2003 ☐ Windows 8/8.1
☐ Windows 7 ☐ Windows 10
☒ Windows 11

Port Check
USB001

Printer Interface :
☒ USB ☐ COM ☐ LAN ☐ BLE

Receipt printer
☒ POS-80C ☐ POS-80
☐ POS-58C ☐ POS-58
☐ POS-76C ☐ POS-76

Check Port
PrintSelftest
Install Now

*Remarks: "C" means item with cutter

☐ Set Default Printer English

Install Configuration

You are using Windows 10 x64 OS.
Please select Windows 10 to install.

Select Windows OS

☐ Windows XP ☐ Windows Vista
☐ Windows 2003 ☐ Windows 8/8.1
☐ Windows 7 ☐ Windows 10
☐ Windows 11

Port Check
USB001

Printer Interface :
☒ USB ☐ COM ☐ LAN ☐ BLE

Receipt printer
☒ POS-80C ☐ POS-80
☐ POS-58C ☐ POS-58
☐ POS-76C ☐ POS-76

Check Port
PrintSelftest
Install Now

*Remarks: "C" means item with cutter

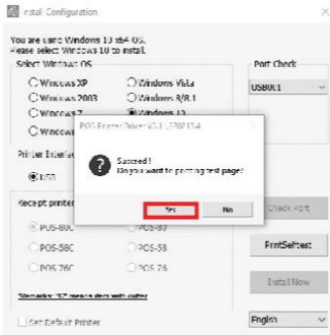
☐ Set Default Printer English

POS Printer Driver V8.11.220218.4

! Your USB printer's Port is :
USB001 ;

OK

- 4) Select "YES" to print the test page and check the printer driver name.
- 5) Installation is completed.

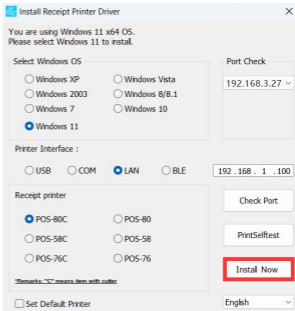
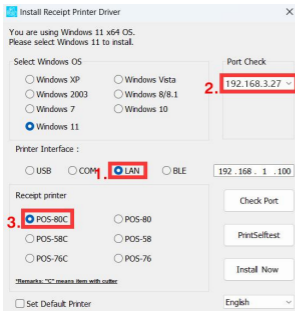


LAN Port Driver Installation

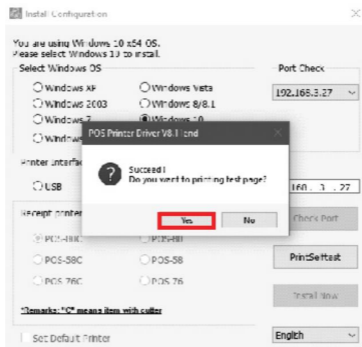


1. Double-click "POS Printer Driver V8.11"
2. LAN driver installation

- 1) Select LAN port and printer type.
- 2) Click Start Installation.



- 3) Select "YES" to print the test page and check the printer driver name.
- 4) Installation is completed.

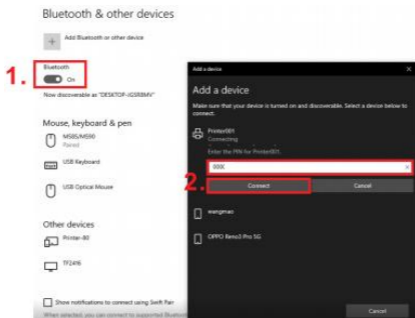


Bluetooth Driver Installation

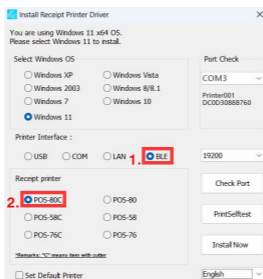


1. Double-click "POS Printer Driver V8.11"
2. Bluetooth driver installation

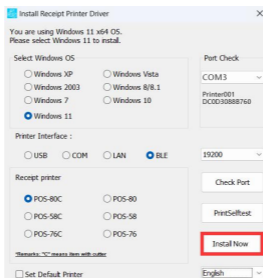
- 1) The computer is connected to the printer Bluetooth,
Bluetooth name: **Printer001** key: **0000**



2) Select the Bluetooth port and printer type.

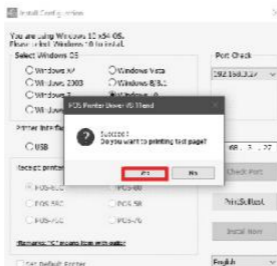


3) Click Start Installation.



4) Select "YES" to print the test page and check the printer driver name.

5) Installation is completed.

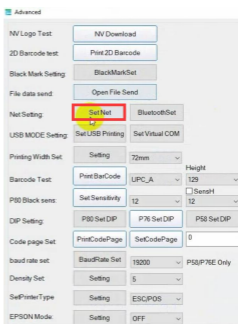
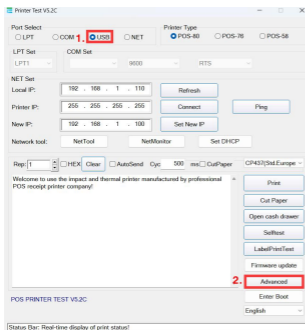


WIFI Driver Installation

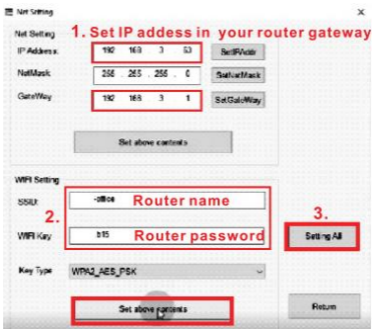


1. Double-click "Printer Test"
2. WIFI driver installation

- 1) Insert "USB" cable, select USB connection, and select "advanced".
- 2) Select network settings.

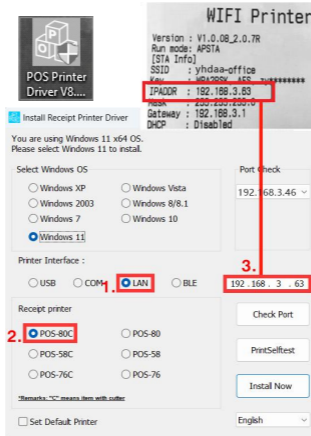


- 3) Set the IP of the printer WiFi (note that the IP needs to be set in the same gateway as the home network), and the printer is connected to the home network.



If the wifi DHCP enable, ignore Step 1

4)Use "POS Printer Driver V8.11" to install the driver, select the network port, printer type and IP port number.



5)Click Start Installation.

6)Select "YES" to print the test page and check the printer driver name.

